

Everything you ever wanted to know about Xubuntu

Presented for Felton LUG



2012-07-14

Elizabeth Krumbach (@pleia2), Xubuntu Web and Marketing Lead

Elizabeth Krumbach

- Linux Systems Administrator
- Ubuntu Community Council Member
- Xubuntu Web and Marketing Lead
- Xfce user since 2004



What is Xubuntu?

- Recognized flavor of Ubuntu
- Based on the Xfce desktop environment
- Uses a suite of default applications geared toward being user-friendly *and* lighter-weight than those which come with standard Ubuntu

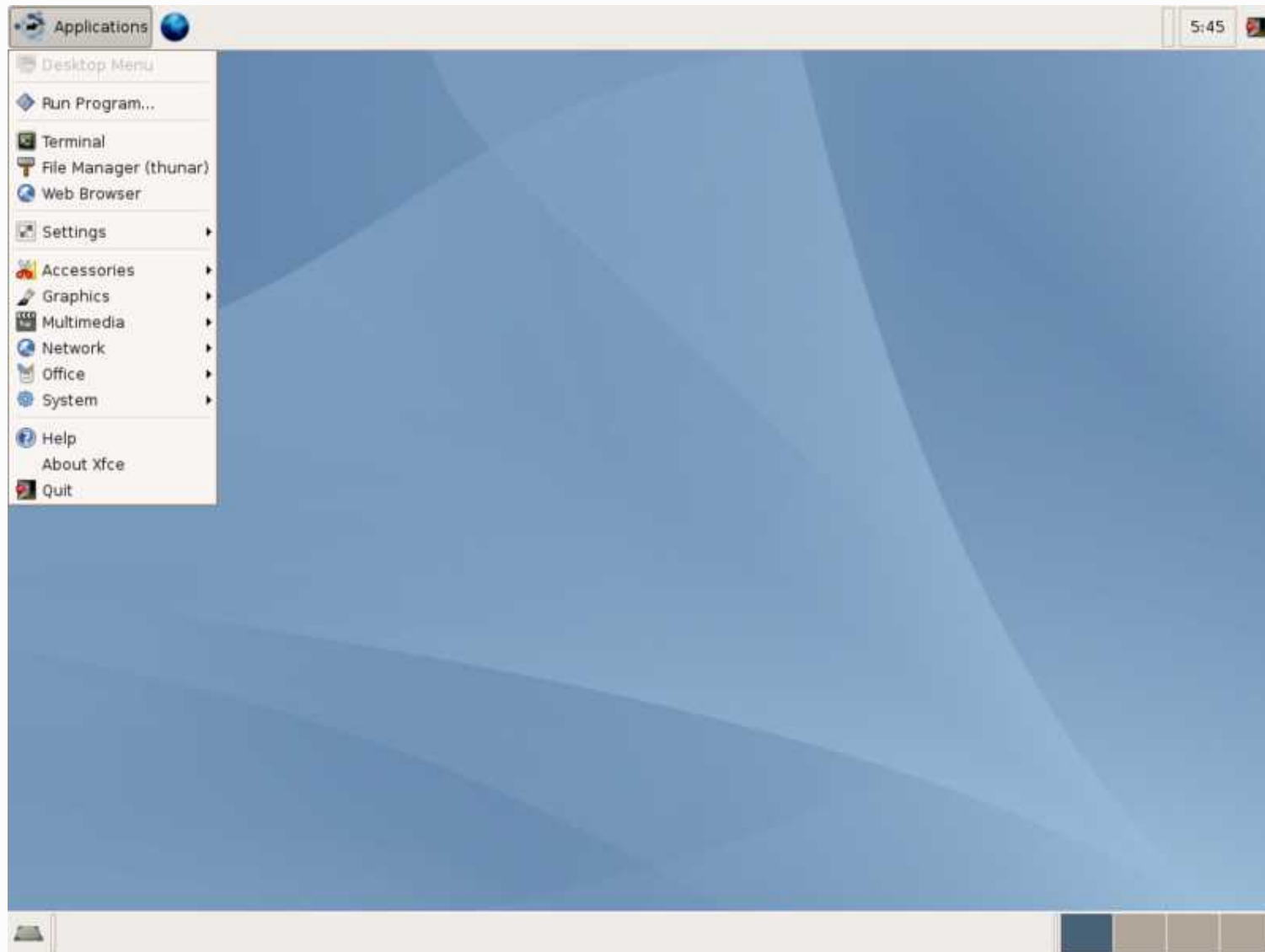


Xubuntu History

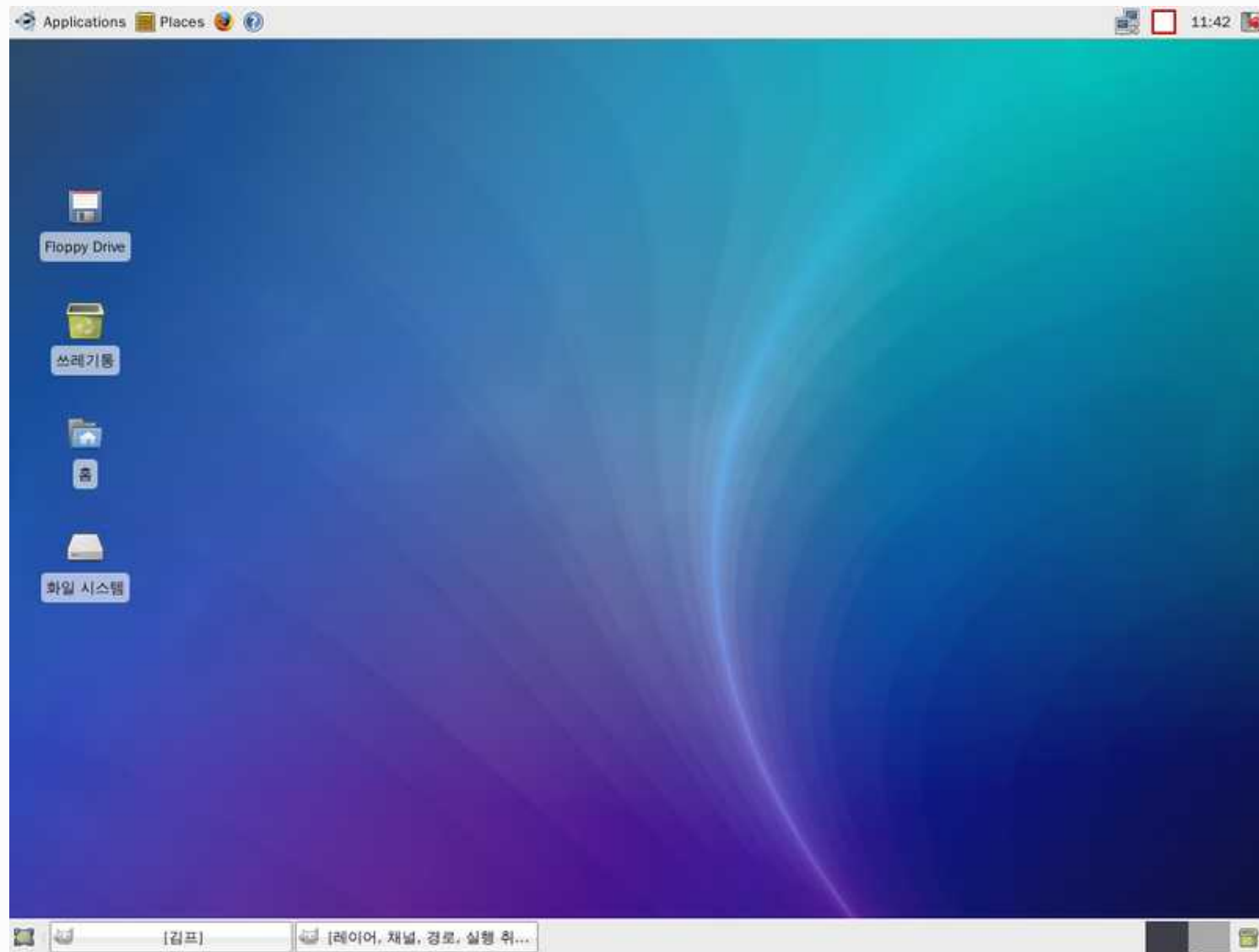
- The xubuntu-desktop package first appears in Ubuntu 5.10, installs Xfce desktop
- Xubuntu 6.06 LTS is first official release
- Former Project Leads: Jani Monoses, Cody A.W. Somerville, Lionel Le Folgoc, Charlie Kravetz
- Current Project Lead: Pasi Lallinaho



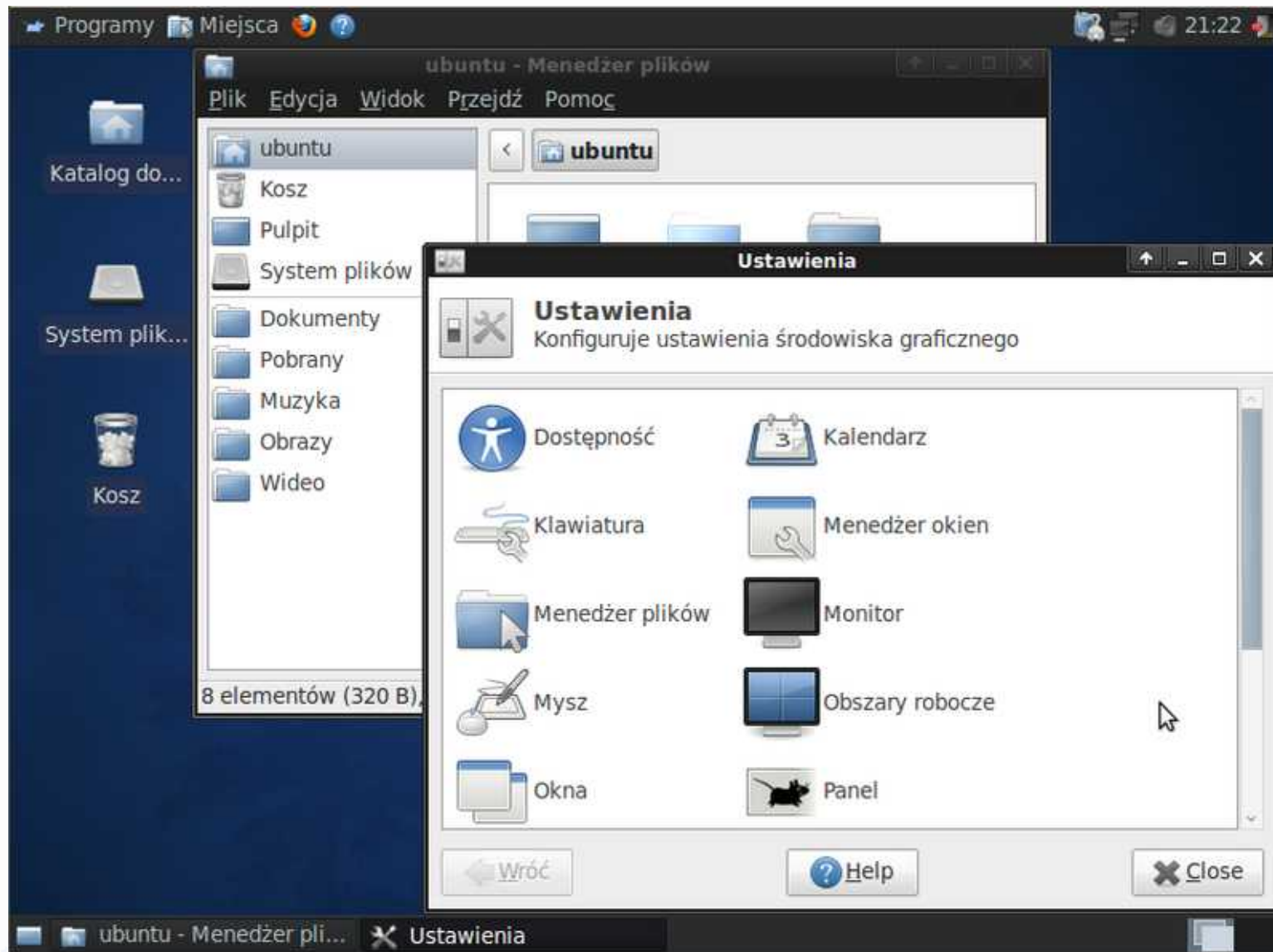
Xubuntu 6.06



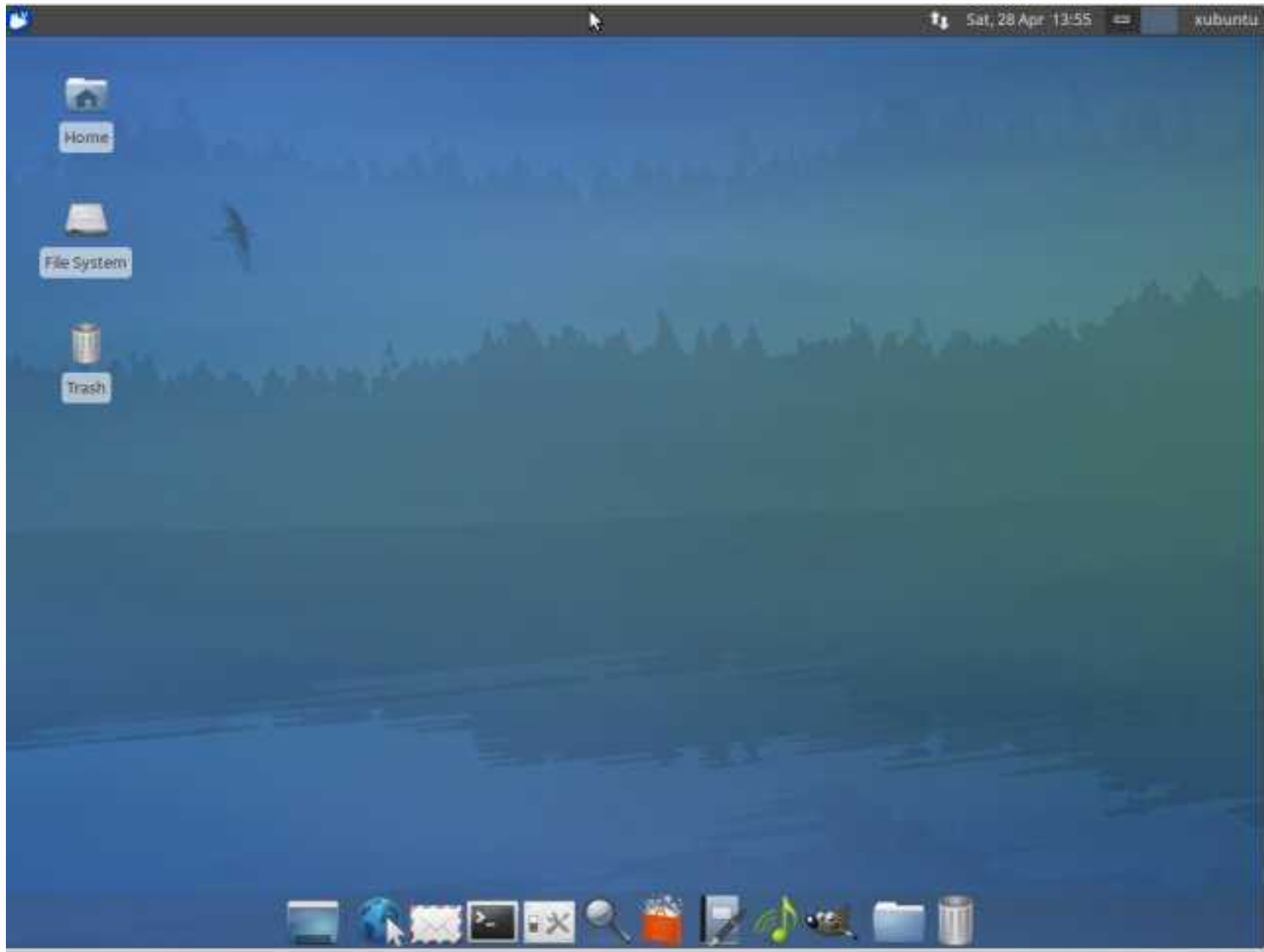
Xubuntu 8.04



Xubuntu 10.04



Xubuntu 12.04



How do you make Xubuntu?

- Design and discuss plan for the 6-month release cycle, including any changes to default applications and more
- Sync from Debian: Xfce packages, many default applications
- Apply merges which apply the existing Xubuntu changes on top of the Debian packages
- Apply other Xubuntu-specific changes: default applications, layout, wallpaper, theming, general appearance
- Fix bugs
- Test, test, test! And fix more bugs.
- Work with Ubuntu QA and Release teams to finalize release



Core Areas of Development

- Programming and Packaging
- Quality Assurance
- Translation and Localization
- Marketing, Promotion & Artwork
- Support and Documentation



Programming and Packaging

- Join (#)xubuntu-devel mailing list and channel
- Contribute to Xfce packaging team in Debian
- Write and backport patches for bugs and security
- Fix build failures with new toolchains
- Maintain backports (and sometimes PPAs)
- Make upstream contributions to Xfce and other default applications



Quality Assurance

- File bugs
- Triage bugs
- Work with upstream on fixes
- Test development versions of Xubuntu



Translation and Localization

- Contribute upstream to translating Xfce and default applications
- Contribute to broader Ubuntu-based translations teams
- Test development versions for complete translations, proper non-US keyboard settings and other localized changes



Marketing, Promotion & Artwork

- Help with current Marketing initiatives
- Get involved with your local Ubuntu team
- Give a talk at your LUG (*well, maybe some other LUG...*)
- Contribute to shimmerproject.org for the default Xubuntu themes
- Contribute to Xfce-Look.org
- Attend meetings to voice your opinion on proposed changes to artwork, wallpaper and other visual elements



Support and Documentation

- Give user support on the xubuntu-users mailing list or #xubuntu on IRC
- Volunteer when calls for documentation help are sent to the xubuntu-devel list
- Contribute to upstream Xfce or default application documentation



Xubuntu 12.10

- Xfce 4.10
- Gimp 2.8
- gThumb 3.0
- Improved GTK3 support for Xubuntu's default themes



Xfce 4.10

- New application finder
- Alternative vertical display mode for panel
- Panel applets can be arranged in multiple rows
- New MIME type editor
- Thumbnail support on desktop
- Tile when dragged to edges support
- <http://xfce.org/about/tour>



Demonstration of 12.10

(well, hopefully, we are in Alpha 2...)



Questions and Contact

- lyz@ubuntu.com
- @pleia2 on Twitter (and IRC, Facebook...)
- <http://www.princessleia.com/>



Credits

- Screenshots from en.wikipedia.org/wiki/Xubuntu
- Slide template by Pasi Lallinaho
- Reviewers: Micah Gersten, Simon Steinbeiß, Pasi Lallinaho

